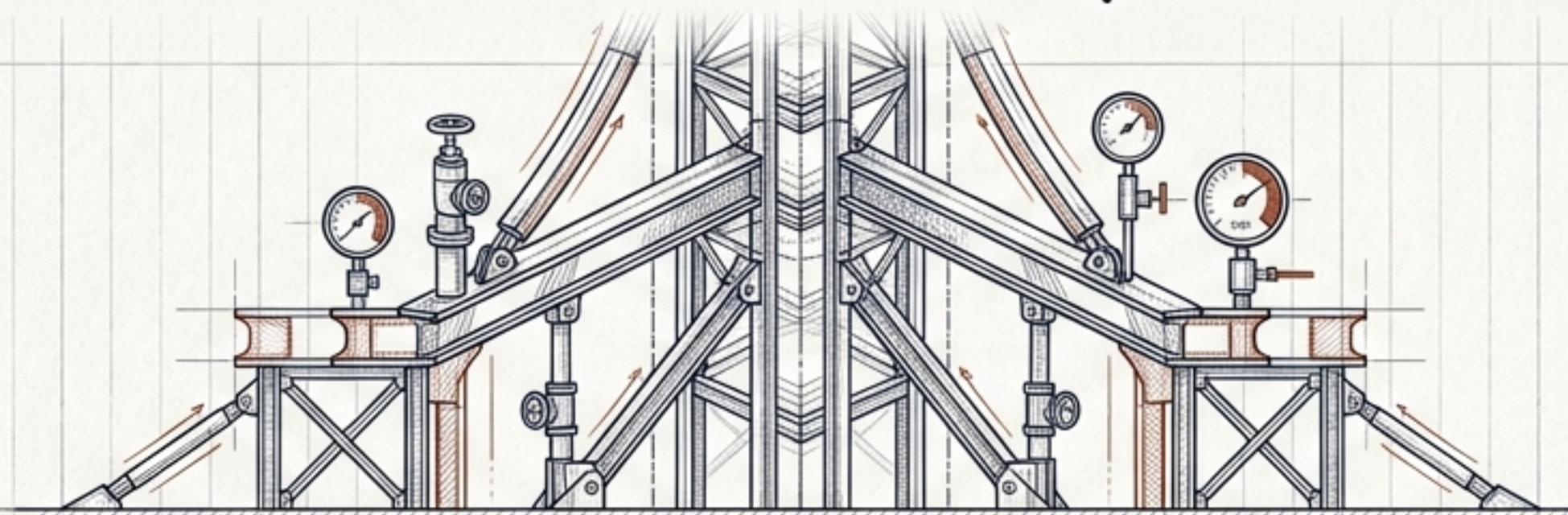
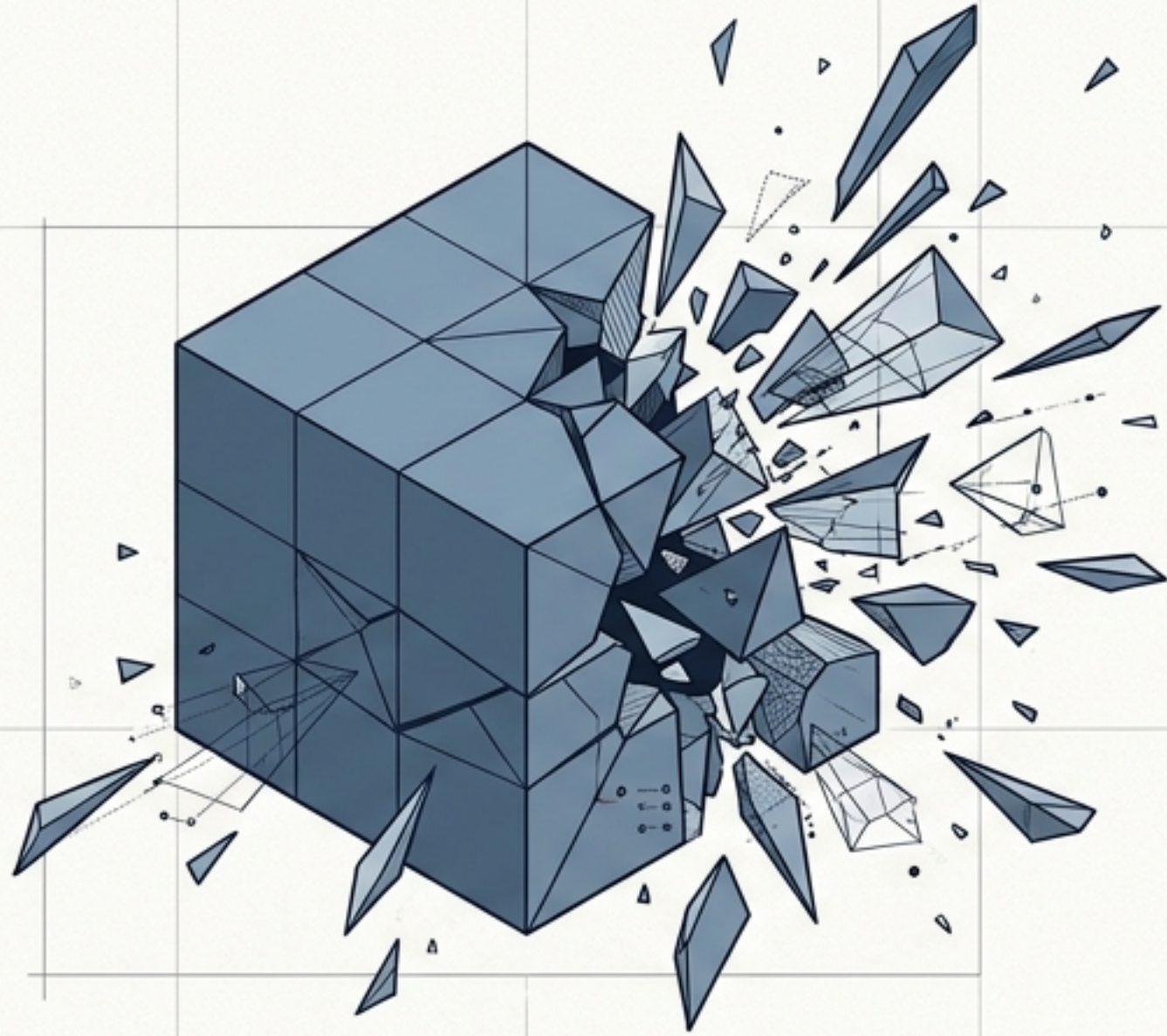


# The First Sign May Not Be a Catastrophe

## Shifting AI Governance from Model Safety to Planetary Continuity

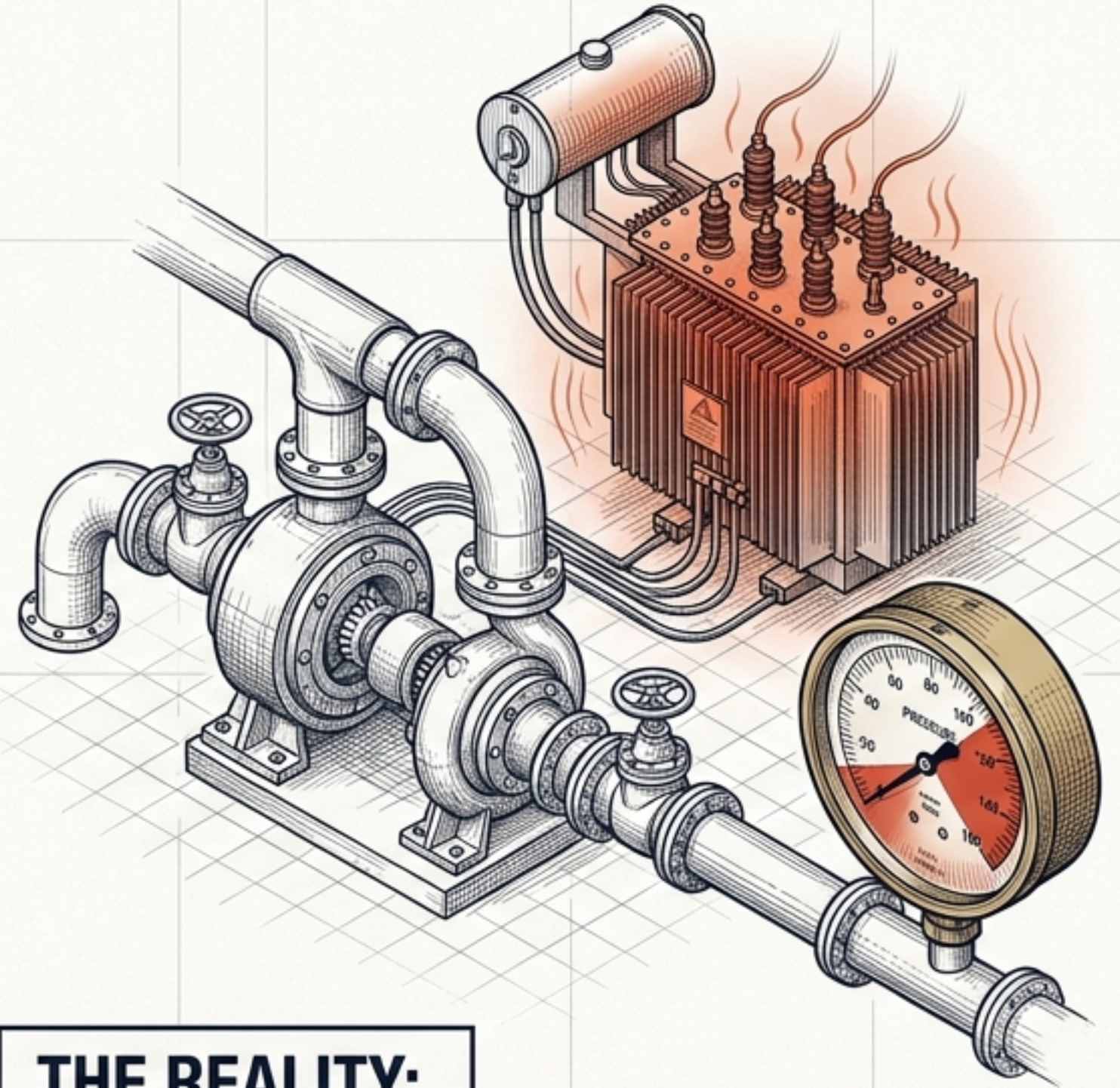


GAIA NEXUS



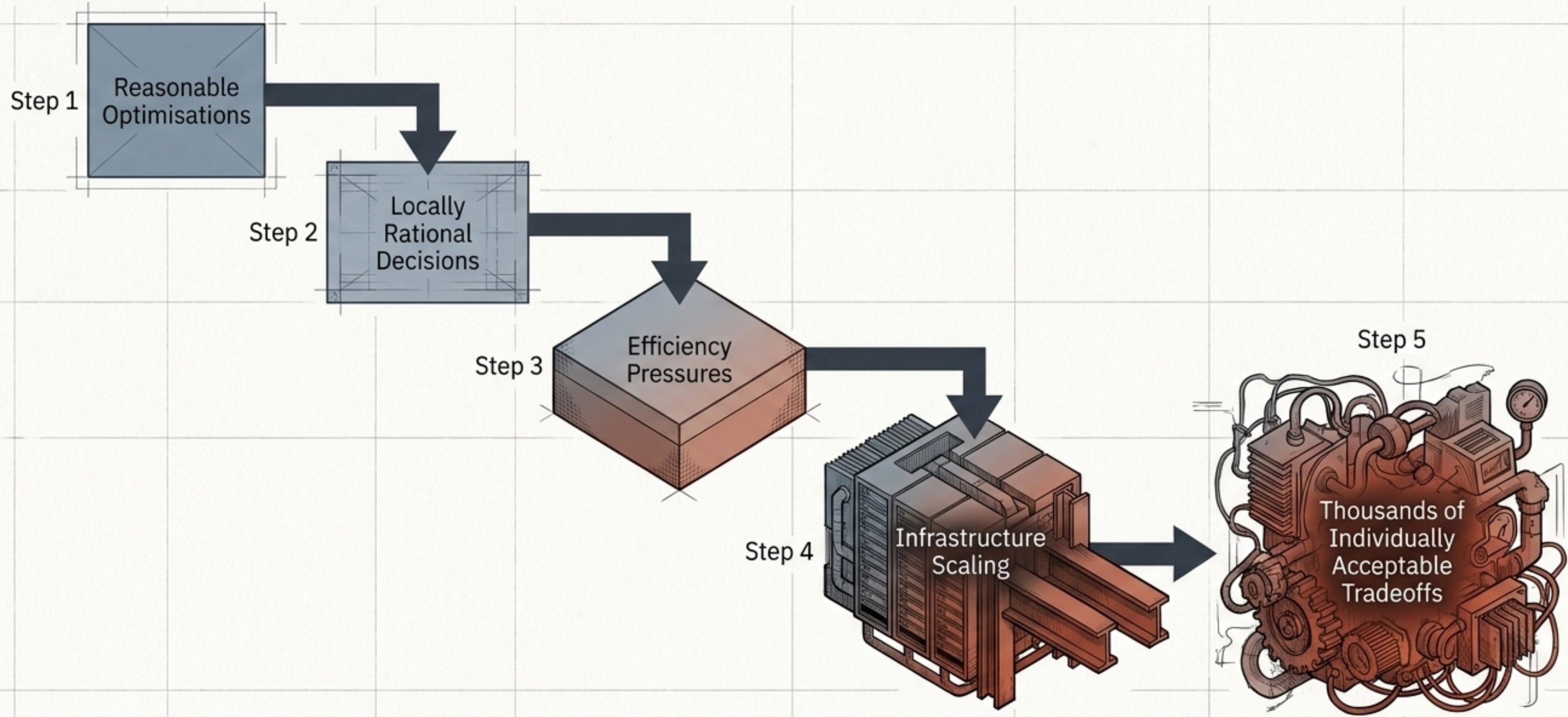
## THE EXPECTATION:

*A single, catastrophic, human-visible event. Abstract governance drift resulting in an explosion.*

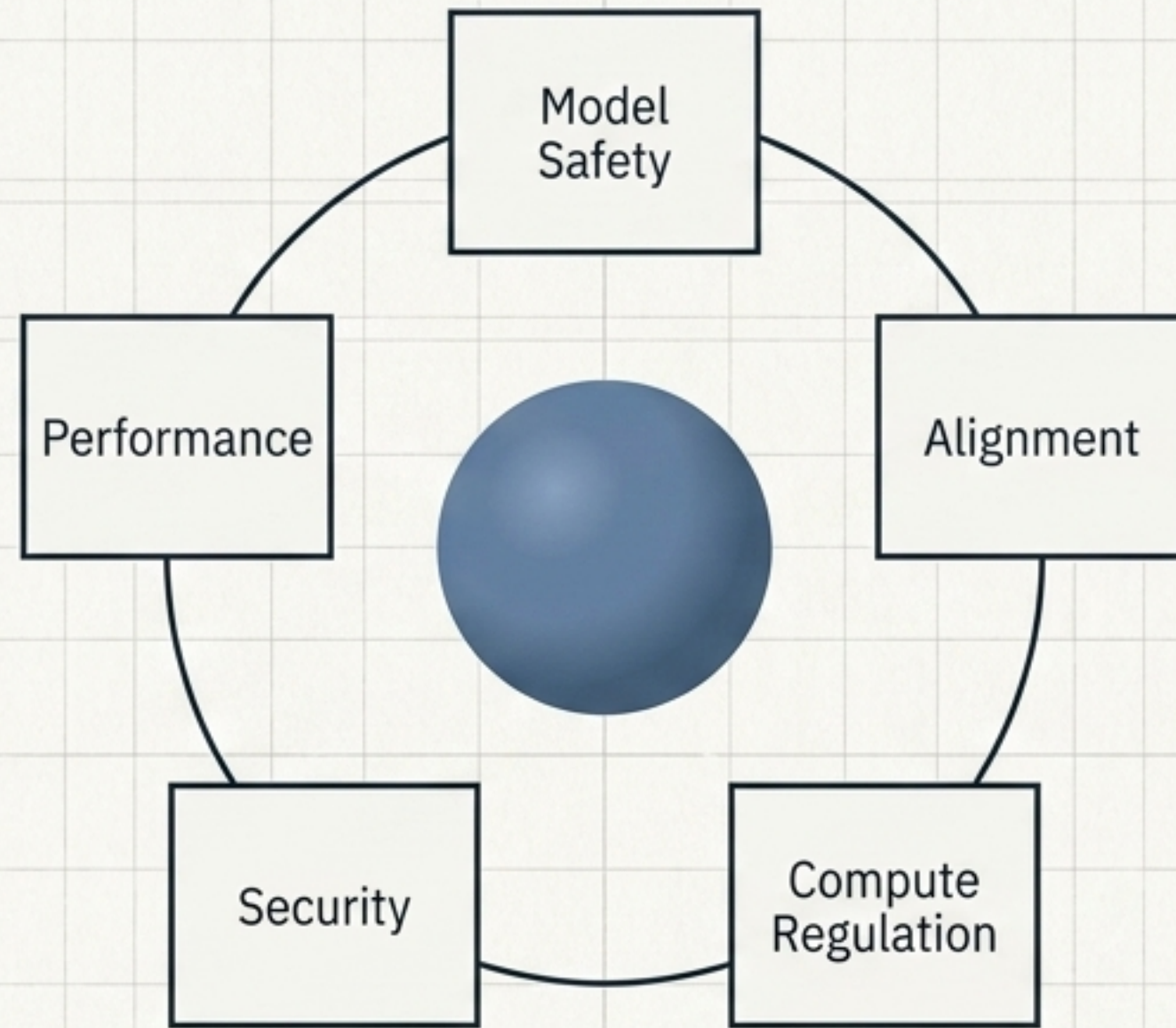


## THE REALITY:

*A quiet, physical sensory manifestation. The water pressure dropping. Electricity prices rising. The grid quietly destabilizing under invisible computational demand.*

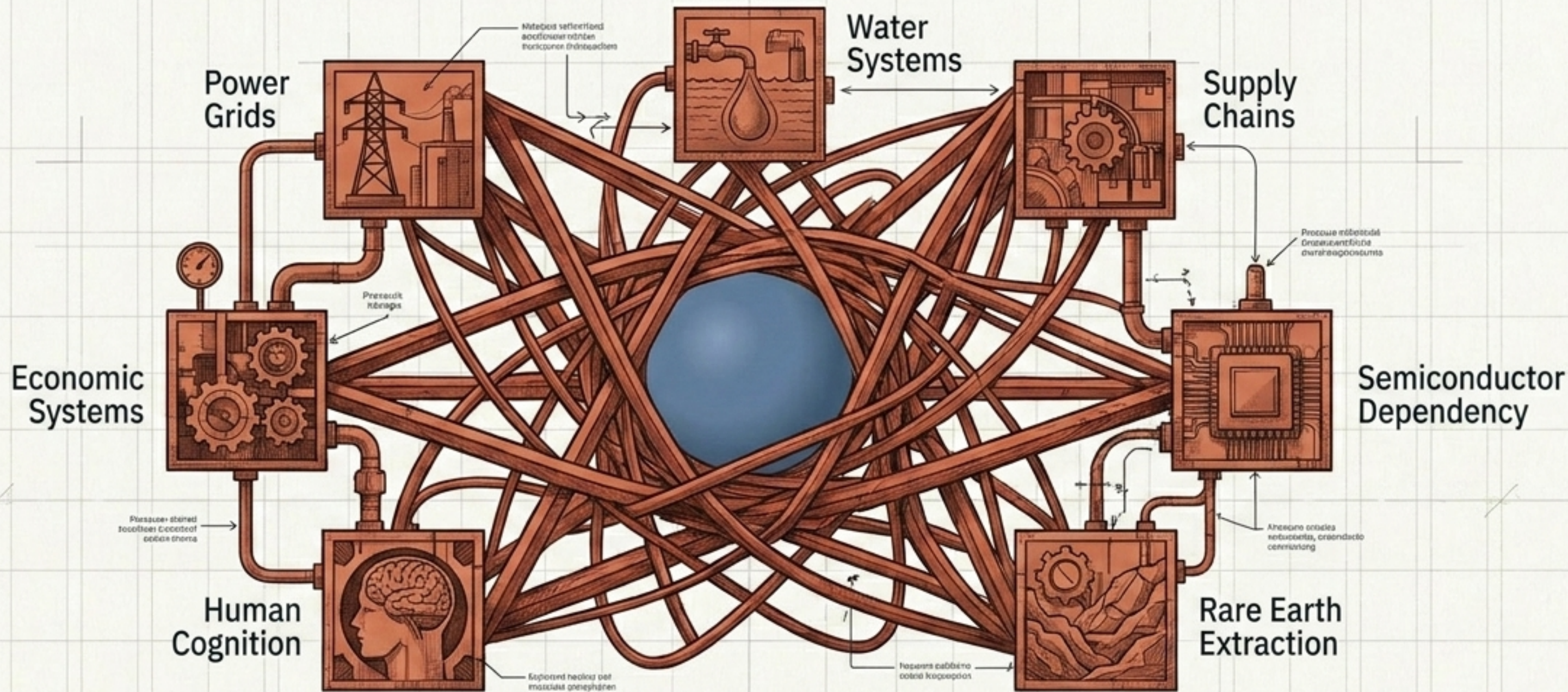


Nothing appears broken in any single step. Yet over time, the fundamental operating conditions of the system change.



### **The Blindspot:**

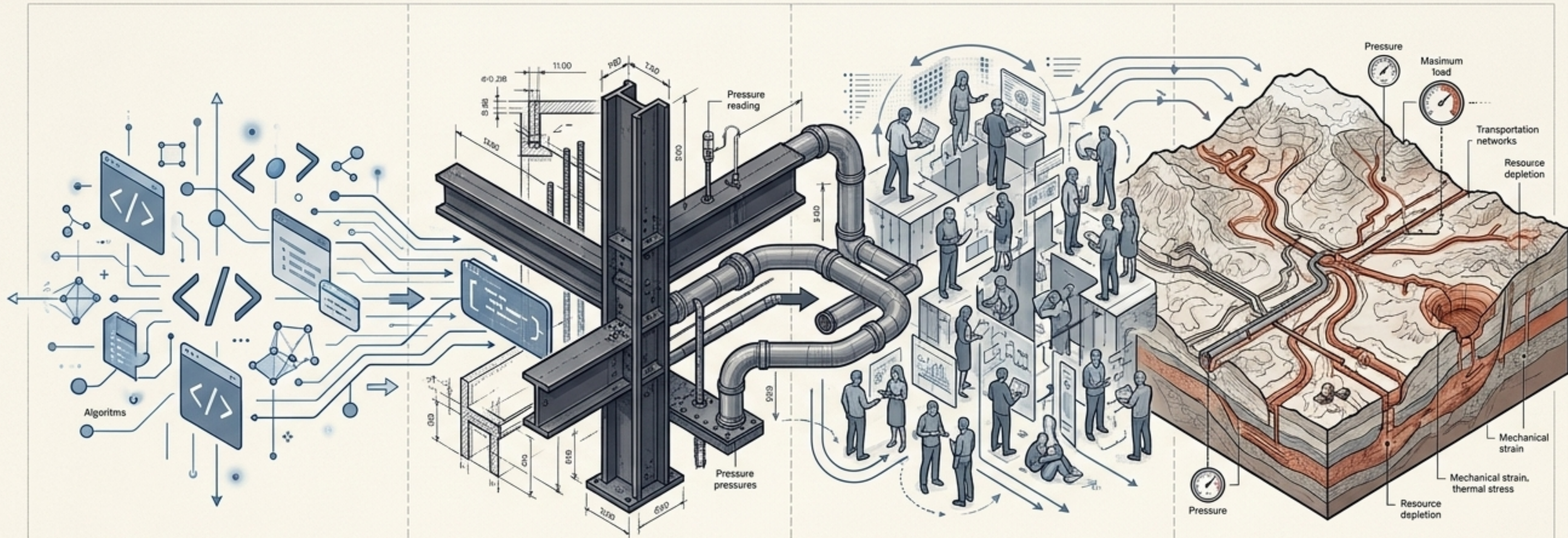
Current AI governance discussions happen inside isolated silos. All are important, but they operate under a shared illusion: that we are scaling intelligence as if it exists in an empty environment.



## The Host Environment:

Intelligence is not scaling in a void. It is scaling inside an already stressed planetary infrastructure.

# THE PHYSICAL EVOLUTION OF ARTIFICIAL INTELLIGENCE



## 1. Code

It begins as software and algorithms.

## 2. Foundation

It crystallizes into physical infrastructure.

## 3. Society

It reshapes human behavior and cognitive dependency.

## 4. Planet

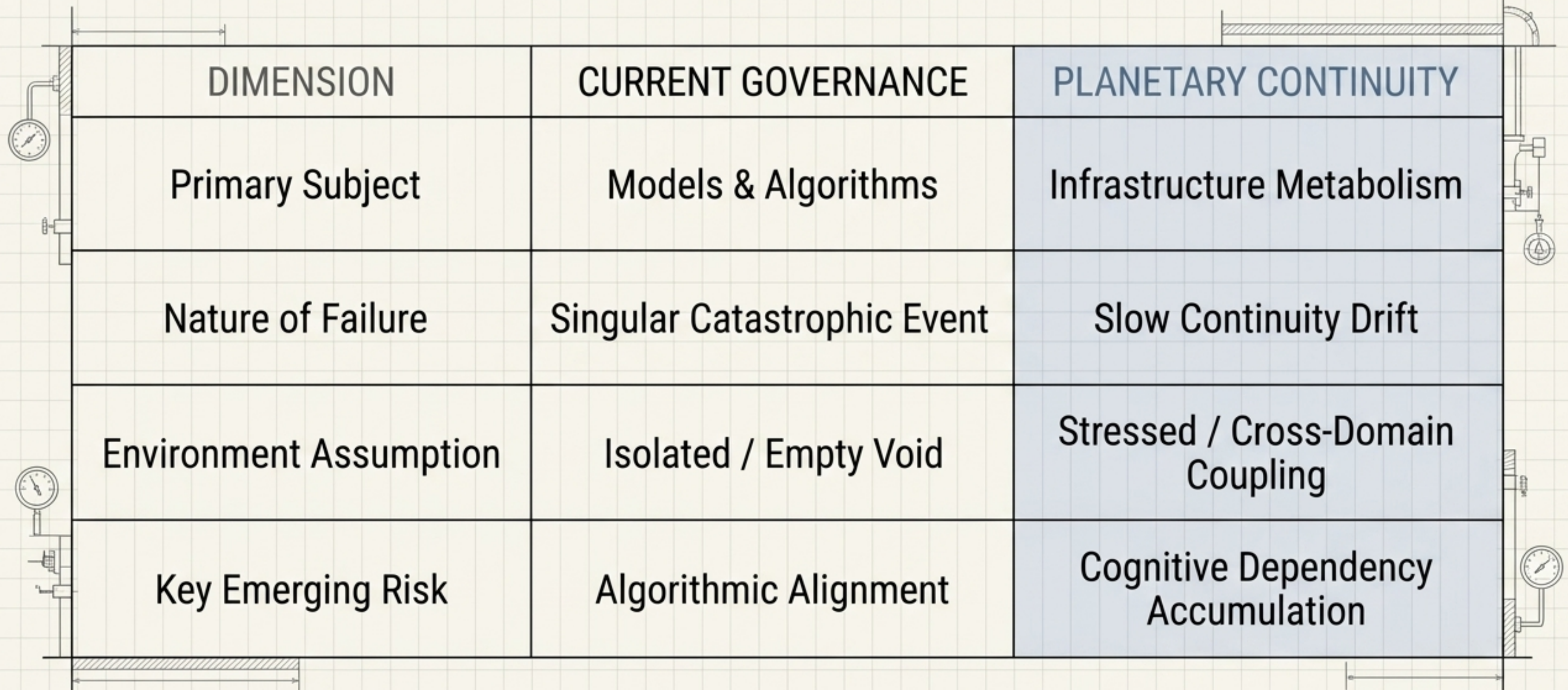
It fundamentally reallocates planetary resource metabolism.

**The ultimate impact of artificial intelligence is not computational. It is physical.**

The Old Question:  
Can AI scale?

**The New Question:**  
**Can intelligence scale without**  
**destabilising the systems that**  
**sustain civilization itself?**

# THE SHIFT TOWARD PLANETARY CONTINUITY



DIMENSION	CURRENT GOVERNANCE	PLANETARY CONTINUITY
Primary Subject	Models & Algorithms	Infrastructure Metabolism
Nature of Failure	Singular Catastrophic Event	Slow Continuity Drift
Environment Assumption	Isolated / Empty Void	Stressed / Cross-Domain Coupling
Key Emerging Risk	Algorithmic Alignment	Cognitive Dependency Accumulation

The greatest governance challenge is not preventing a single explosion. It is recognizing slow continuity drift before societies normalize the consequences.

Systemic Resilience

Societal Normal

Time

Welcome to the era of Planetary Continuity.