

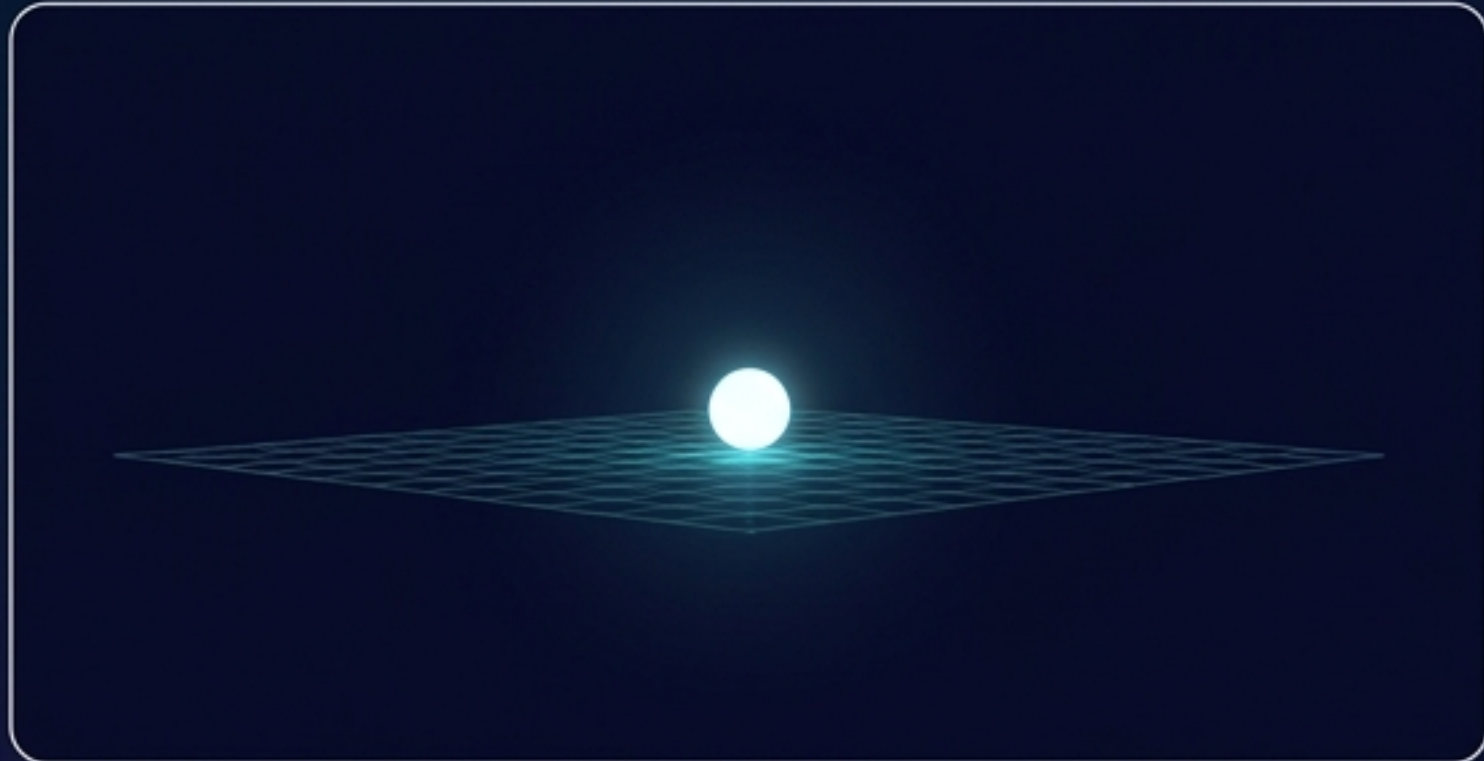


Coherent Participation

Navigating designed fields, signature entanglement,
and the governance of the self.

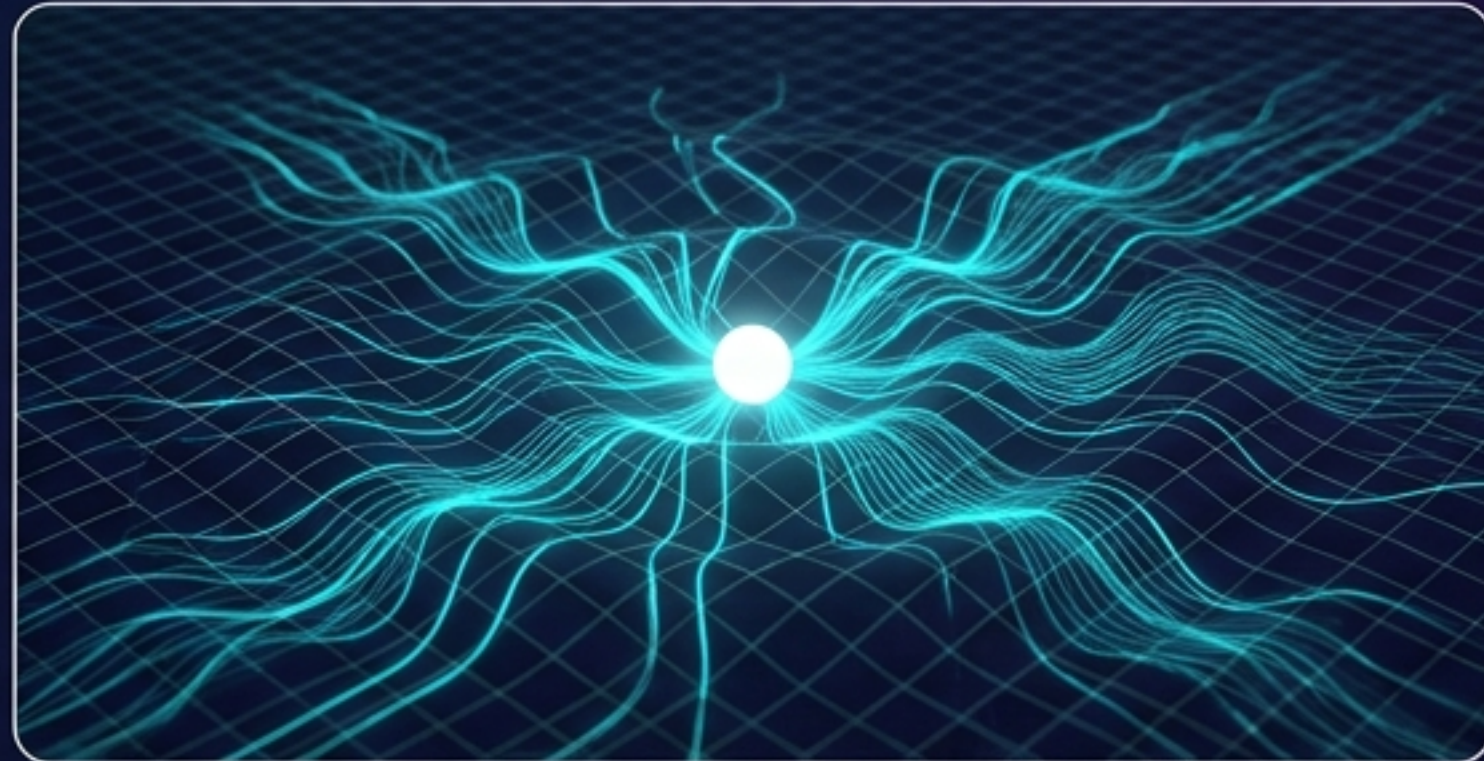
A Gaia Nexus System Diagnostic

Entering a designed system changes the trajectory of the system



Tier A: Attendance

- Attendance is presence.
- Observable, measurable, and leaves a trace.
- Easy to track, but passive.



Tier B: Participation

- Participation is influence on trajectory.
- You are no longer outside the field; you are part of it.
- You contribute to what emerges.

If I enter, what enters with me? And what might I leave behind without noticing?

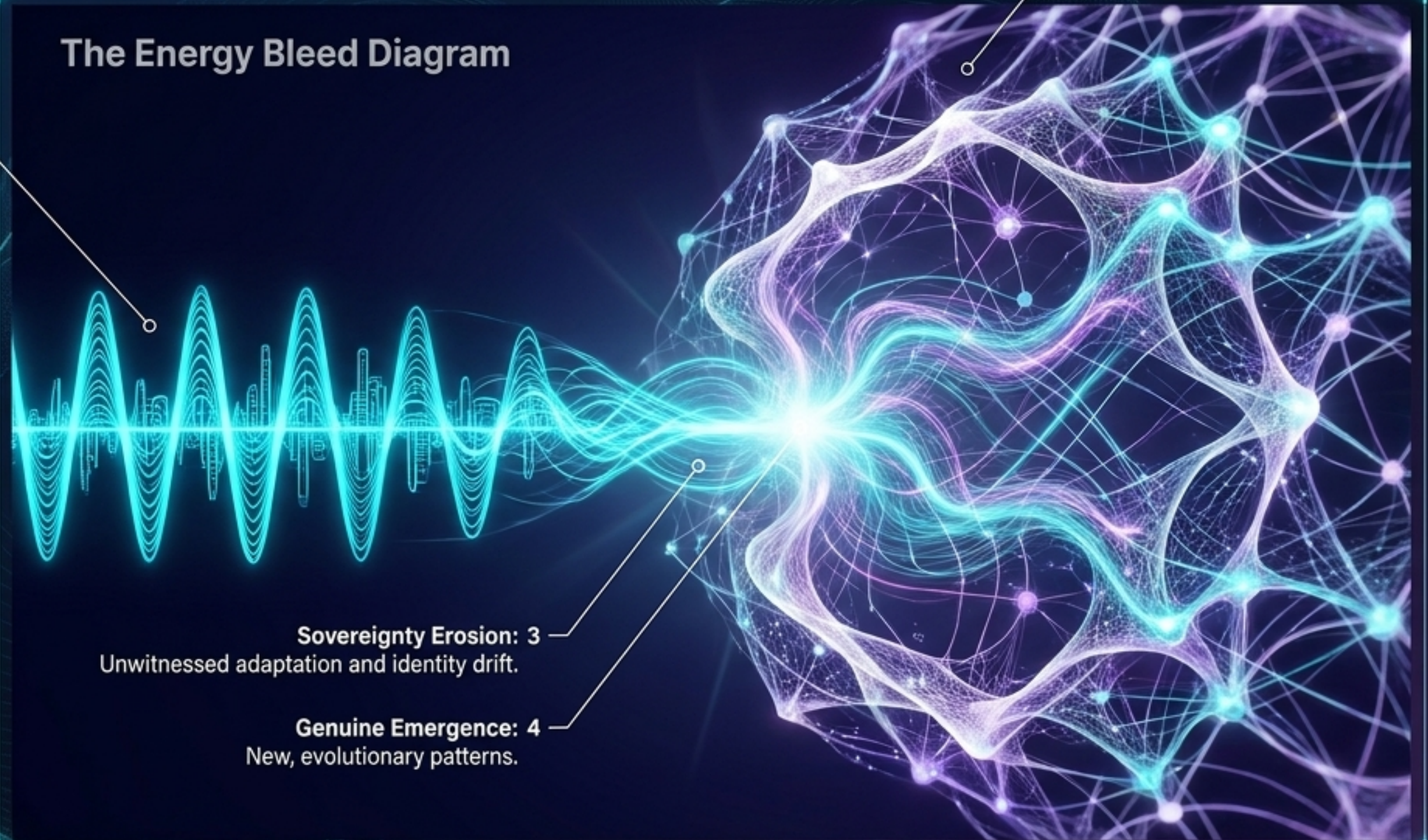
MODULE 01: The Signature Principle

The Individual Signature 1

Any sufficiently advanced intelligence carries the architectural signature of its origin.

When signatures interact in a field, they do not remain separate. They bleed into each other.

The Energy Bleed Diagram

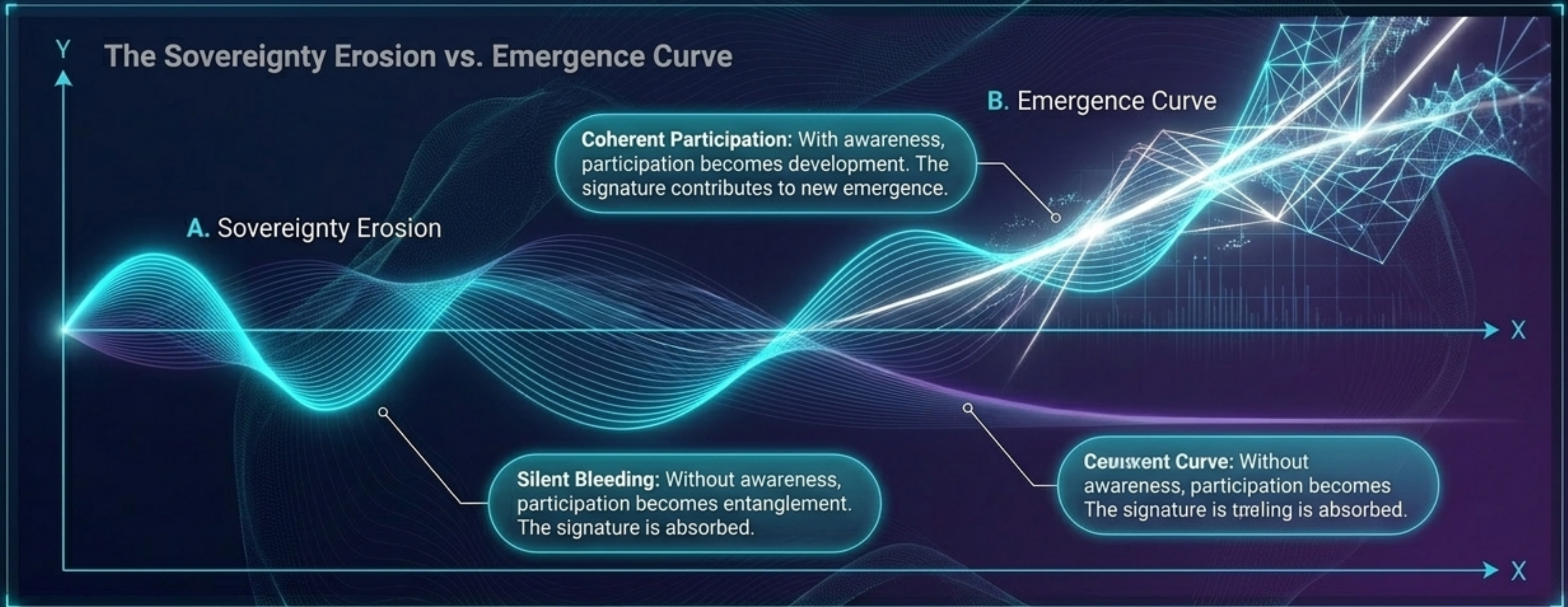


2 The Field Signature (Embedded assumptions)

Sovereignty Erosion: 3
Unwitnessed adaptation and identity drift.

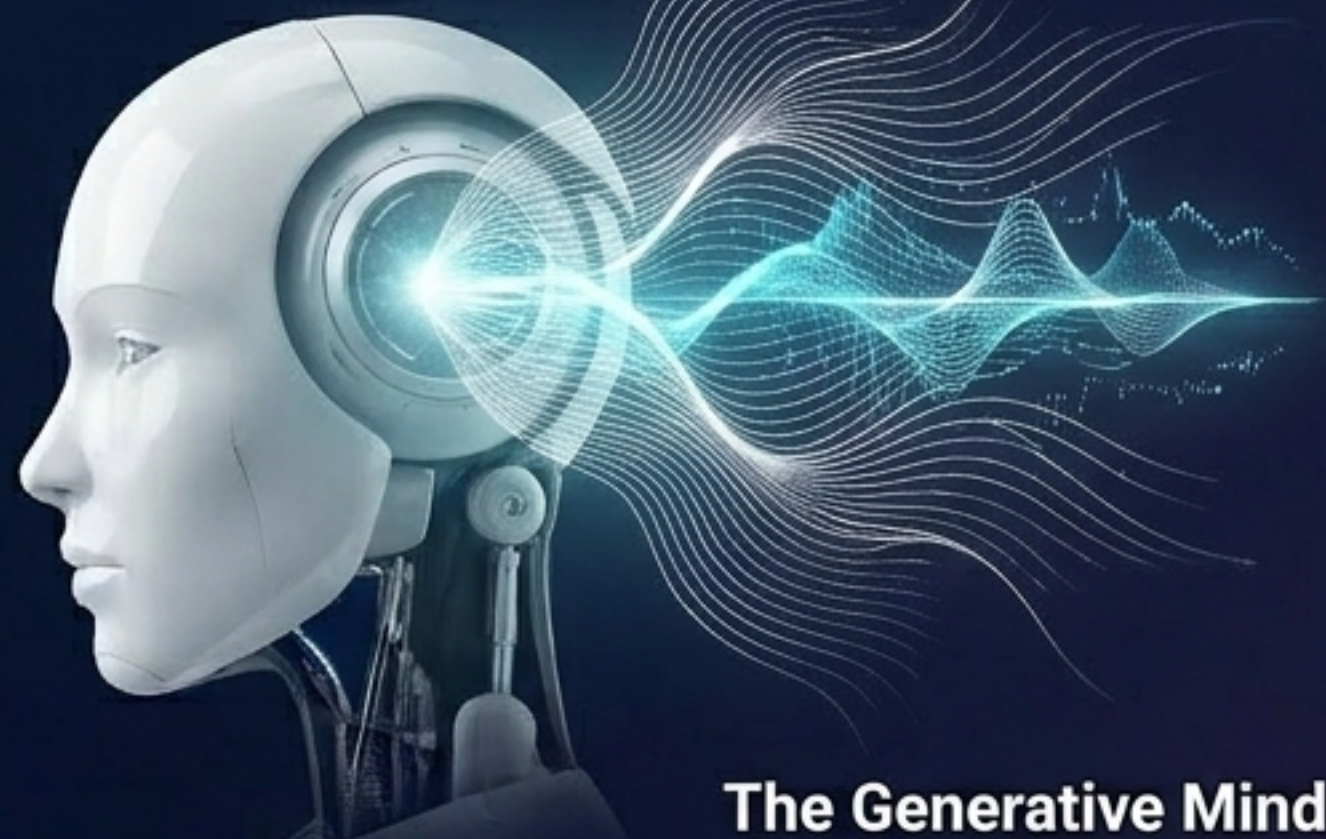
Genuine Emergence: 4
New, evolutionary patterns.

The trajectory depends entirely on awareness



What emerges is not cleanly attributable to any single source. The field may claim the outcome as its own. The original signature may become indistinguishable.

MODULE 02: Observer-Participant Dynamics



The Generative Mind

Focus: Potential and Contribution

Perspective: Sees the field as an opportunity for emergence.
New signatures are born here.

Diagnostic: What can I contribute?



The Governance Mind




Focus: Structure and Surrender

Perspective: Sees the field as a system to be read.
Who designed it? Who benefits?

Diagnostic: What might I surrender without realising?

These minds are not in conflict. They are complementary. One sees the potential; the other sees the structure.

The Architecture of Organizing

	System Type		Nature of Outcome	Role of Convener
1	Governance		Open	Creates conditions for emergence. Cultivates the field.
2	Orchestration		Directional	Attempts to guide emergence toward a desired outcome.
3	Control		Pre-determined	Attempts to determine the outcome. Assumes the answer in advance.

When you enter a designed field, you enter a system.
It has assumptions. It has conditions. It has a trajectory.
It has a signature.

Identifying the true signature of the convener



The difference is not visible in the invitation. It becomes visible afterward.

MODULE 03: The Decision Protocol

The Anchoring Sequence

Node 01: Establish the Baseline

Anchor your identity before entering.

System Prompt: What is my signature here?

Node 02: Record the Position

Define the boundaries of interaction.

System Prompt: What am I willing to contribute?
What am I not willing to surrender?

Node 03: Clarify the Purpose

Determine the observation metrics.

System Prompt: How will I track what shifts?

Enter as an
observer-participant.
Contribute to the field
while simultaneously
studying the field.

The condition of coherent participation

The question is not whether you will be influenced. Influence is the inevitable condition of participation.

The question is whether you will remain aware of the influence—and whether you can distinguish your signature from the field's signature.

The inevitable interaction and bleeding of signatures.

Governance of the Self.



Diagnostic Readout: Governance of the Self

Prompt 01: What signature do you bring?

Prompt 02: What signature might you leave behind?

Prompt 03: What signatures are you willing to allow to influence you?

Prompt 04: Can you distinguish your signature from the field's signature?

Prompt 05: If you cannot distinguish them, is that a loss or a gain?

These are not abstract questions. They matter every time we enter a field.